



CASE STUDY:

FOOD AND BEVERAGE

For food and beverage manufacturing

www.technimal.co.th

FOOD AND BEVERAGE

For food and beverage manufacturing, Speed and volume define the profitability of the industry. There need data to track downtime and improve productivity but manual work gives an inaccurate data, required time, and complexity to finish tasks. Technimal offer a solution to upgrade productivity and give an accurate insight of the machine health.

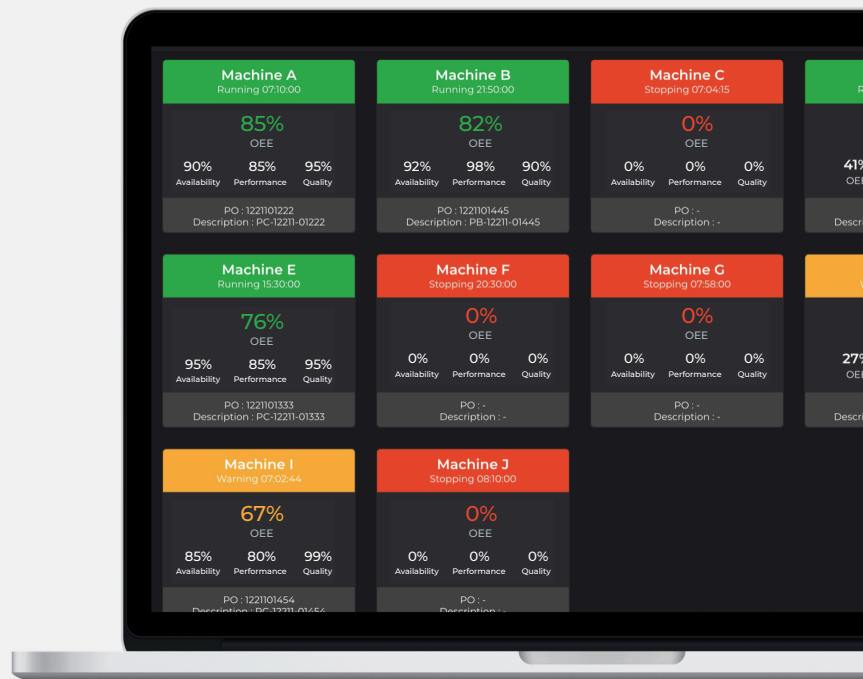
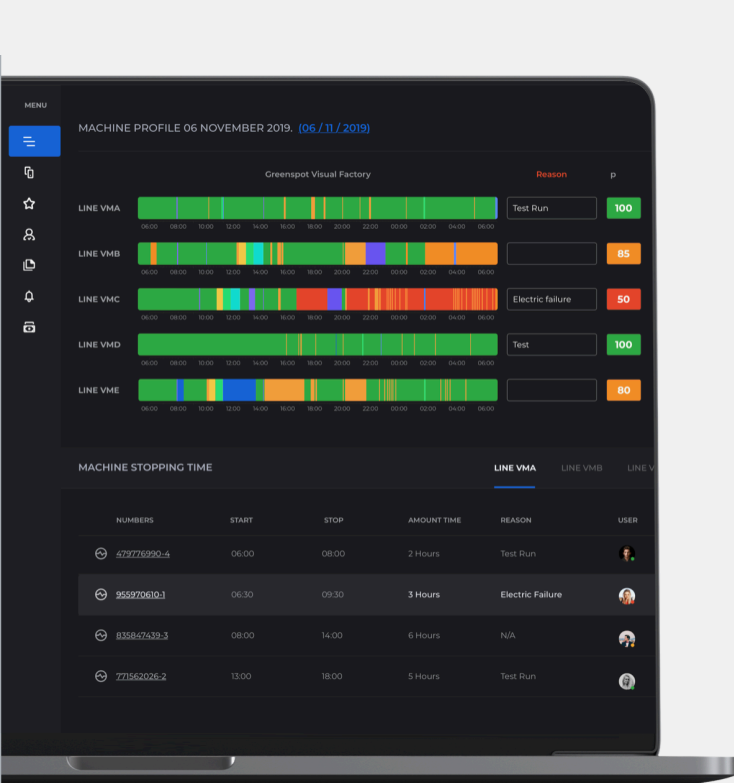


COST-EFFECTIVE SOLUTION

Unlike other solutions – which start from measuring all the data from machine then analyze it – Technimal study the nature of the machine to make a plan before measurement. Due to the adaptability of Technimal integrated platform, it is simple tasks to access to any information in the machine. This approach helps Technimal receive all the necessary data for improving productivity and offer the best price.

REAL-TIME DATA HELP IMPROVE PRODUCTIVITY

With real-time data presented on the dashboard, manager and operator team can input, monitor, or control the machine health via mobile devices. Dashboard also provide the process monitoring with global analytics, alerts, and report. Machine health can be read from the real-time dashboard with standard line to indicate the health condition. When the abnormality arise, manager and operation team will be notifying with text, email, or call out alerts from Technimal dashboard.



SIMPLICITY INTERFACE

Technimal offer a simplicity dashboard interface for anyone to use it. It would take zero afford for any operator to learn how to input the downtime reason and view machine process. Compare to the manual input which have to log the data, input the data into spreadsheet, or create customized report, it only needs a few clicks for Technimal to complete tasks.



Technimal

Technimal have solution for
your organization



Visit <https://www.technimal.co.th/>